

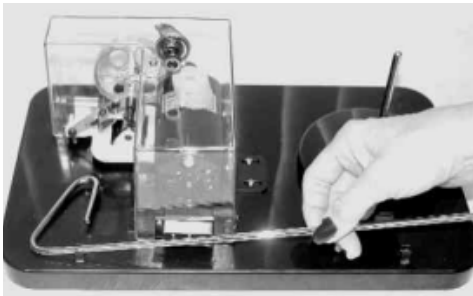
# Stand Alone Bobbin Winder Assembly & Use Instructions



Unit Includes:

Base Winder and Motor Unit  
Thread Mast  
Electronic Foot Control

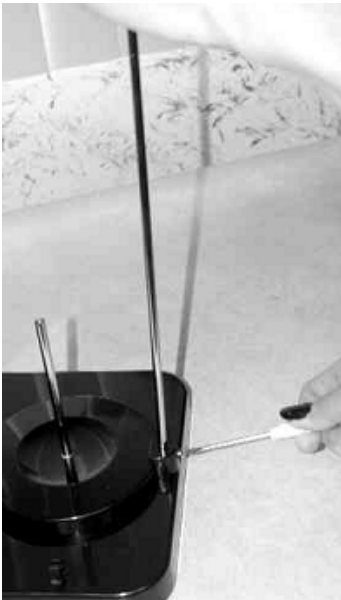
## Assembly



1. Remove Thread Mast from front of base unit.



2. Locate Set Screw at back of base unit. And loosen it by turning screw counter clockwise.

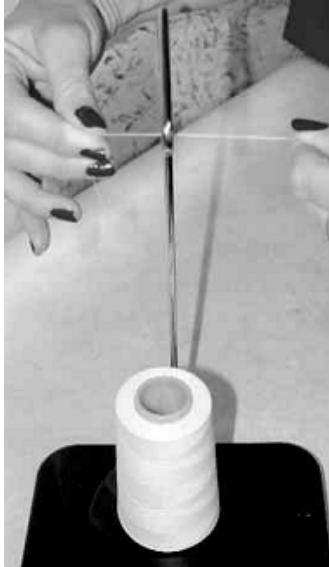


3. Insert mast into base unit and tighten set screw turning it in a clockwise direction.



4. Plug in Foot Control Unit.

## Threading and Use Instructions



1. Place Thread on Base Spool Pin and thread through Thread Mast.



2. Place thread through guide at the top of the tension assembly



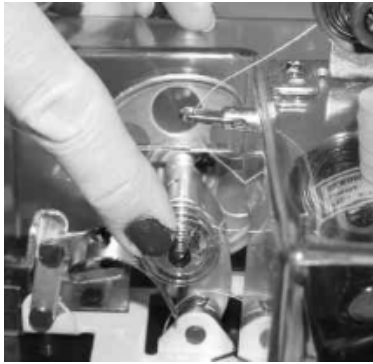
3. Thread Tension Assembly. Thread from thread guide over the top of tension disks from front to rear. Make sure thread is placed between the two disks by giving a slight tug..



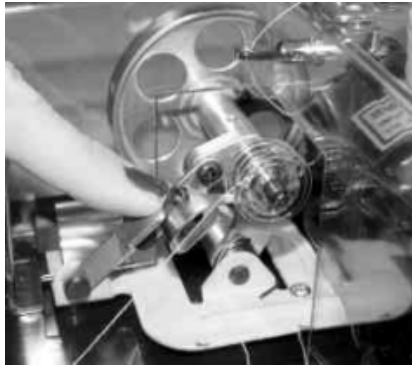
4. From the underside of the tension assembly the thread is placed in the front thread guide



4. Wrap thread around the bobbin five or six times to prior to placing bobbin on winding spindle.  
\* Viking version see note below.



5. Place Bobbin On winding spindle.

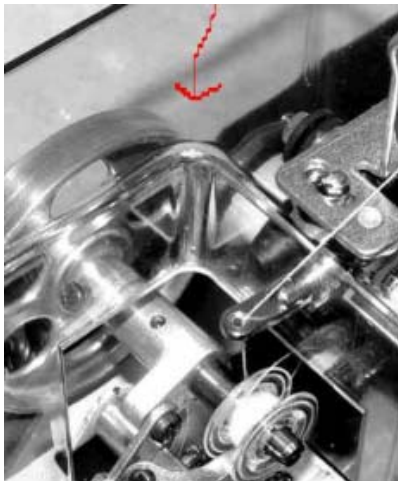


6. Press engagement lever until full engaged.

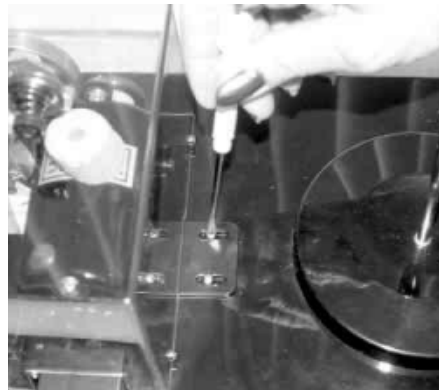
1. Depress foot control and run until bobbin is full.

## Adjusting Stand Alone Bobbin Winder

### Motor Adjustment



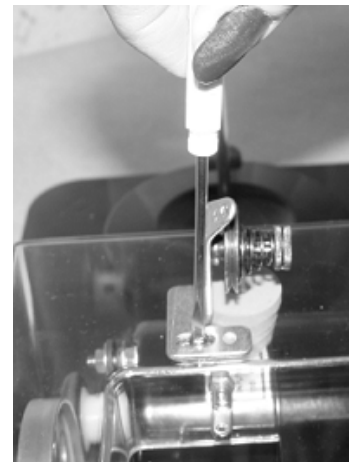
The bobbin turns when the bobbin winder is engaged and the bobbin winder wheel touches the friction ring on the motor. If the wheel fails to properly contact the friction ring the bobbin will not wind. If the wheel is too tight against the friction ring the bobbin winder will run slow.



Adjust motor by loosening two set screws at rear of motor. Engage bobbin winder and move motor until friction ring touches winding wheel.

### Adjusting Bobbin Lead

When the bobbin winds unevenly you must adjust the bobbin lead (last thread guide before bobbin.) With screwdriver, move the assembly right or left while bobbin is winding until bobbin winds evenly.



## **Viking Bobbin Winder Instructions.**

The Viking version of the Universal Bobbin Winder does not have a spring clip to hold the bobbin on the spindle. You must wrap the thread around the bobbin five or six times leaving a long tail. When the bobbin is placed on the spindle you will thread this long tail into the hole that is on the spindle to the left side of the bobbin. This will cause the bobbin to spin with the spindle.

